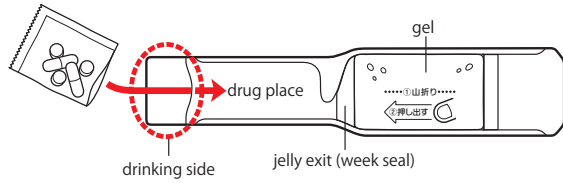


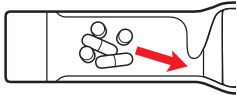
taking medicine so simple
Taking support jelly kit for **NOMERUMON** **HOW TO USE**

Drinking Method

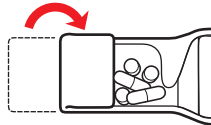
- ① Set medicine (supplement etc) from the drinking side into drug space.



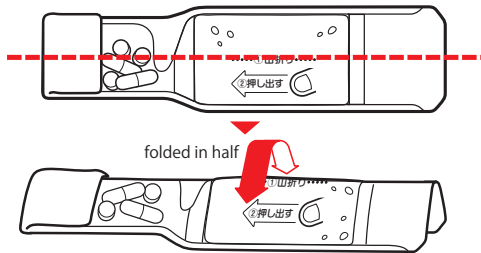
- ② Set medicine close to the jelly exit.



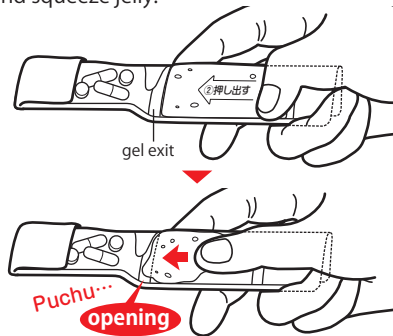
- ③ Fold drinking side.



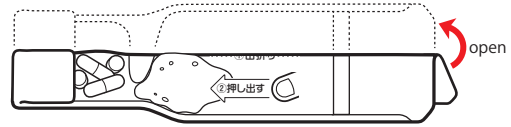
- ④ Fold the center of the package into a mountain shape.



- ⑤ Press and squeeze jelly.



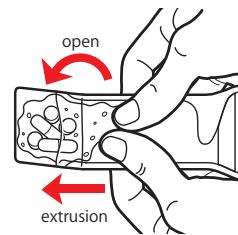
- ⑥ Jelly break through the seal by squeezing.



- ⑦ While holding the edge of the drinking side, make drugs wrapped around with jelly.



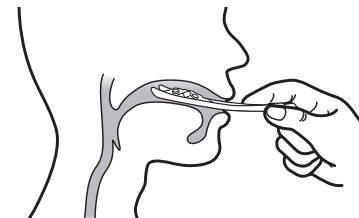
- ⑧ Squeeze jelly forward.



- ⑨ Holding in spoon shape.

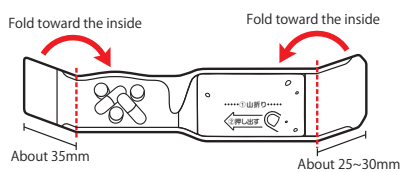


- ⑩ Put medicine on the back of the tongue and pull slowly back from the mouth, then swallow.

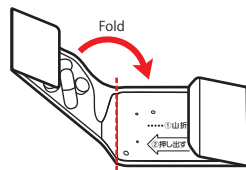


Carrying Method

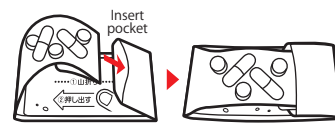
- ① After setting the medicine, fold the both ends along the dotted line.



- ② Fold in half in the middle.



- ③ Insert the drinking side into the back pocket.



- ④ You can feel free to carry anywhere and take medicine anytime.



※Use effect differ from individually. When you have swallowing disorders, please ask doctors or experts before use.
※Specifications are subject to change without notice.